



**GROSSMONT COLLEGE**

**Facilities Committee**

**May 3, 2023**

**9:30am-11:00am**

**Location: Zoom [Join Zoom Meeting](#)**

**NOTES**

**Purpose** The Facilities Committee identifies, prioritizes and advocates for the facilities needs and services. It makes recommendations to the College Council for the strategic direction and implementation of facilities priorities. These recommendations address facilities policies and procedures, prioritization of facilities requests from annual unit plans\*, facility requirements for existing programs, and projected facility needs of the college for the future. The committee will ensure that its recommendations are consistent with the objectives and recommendations established in the Facilities Plan, Strategic Plan, Educational Master Plan, and other supporting plans and reports (five-year capital outlay plan, use of space, scheduled maintenance, state and federal reports, etc.).

CO-CHAIRS	ASSOCIATED STUDENTS OF GROSSMONT COLLEGE	ADVISORY
<input checked="" type="checkbox"/> Loren Holmquist	<input checked="" type="checkbox"/> Renzo Tavag	<input type="checkbox"/> Marshall Fulbright
<input checked="" type="checkbox"/> Jennifer Bennett	<input type="checkbox"/> Elliana Capurro	<input type="checkbox"/> Marsha Gable
		<input type="checkbox"/> Jason Allen
		<input type="checkbox"/> Reyna Torriente

ACADEMIC SENATE	CLASSIFIED SENATE	ADMINISTRATORS' ASSOCIATION
<input checked="" type="checkbox"/> Jennifer Bennett	<input checked="" type="checkbox"/> Rochelle Weiser	<input checked="" type="checkbox"/> Maura Mehrian
<input checked="" type="checkbox"/> Michael Bacon	<input checked="" type="checkbox"/> Chad Deitchman	<input checked="" type="checkbox"/> Vanessa Fountain

EX-OFFICIO	RECORDER	Campus Art Committee
<input type="checkbox"/> Patrice Braswell-Burris	<input type="checkbox"/> Colleen Parsons	<input checked="" type="checkbox"/> Jennifer Bennett
<input type="checkbox"/>		

ROUTINE BUSINESS	
<b>Welcome and Introductions –</b> Jennifer Bennett	Introductions
<b>Additions/Deletions to Agenda –</b> Jennifer Bennett	None
<b>Approve Meeting Notes &amp; Follow-up –</b> Jennifer Bennett	April notes approved
<b>5-Minute Public Comment –</b> Jennifer Bennett	

**NEW BUSINESS**

<b>Updating the Facilities Project Request Questions/Form</b>	<i>Discussion on the forms used for FPR process. See forms in PowerPoint Committee to look over for any proposed changes.</i>

**COMMITTEE REPORTS**

<b>Art Committee Update – Jennifer Bennett</b>	See PowerPoint (for project details) motion was made to approve the current art project and the project was approved
Previous Facilities Project Request Update – Loren Holmquist	See PowerPoint
<b>Construction Timeline and Campus Impacts – Loren Holmquist</b>	See Power Point

**DISCUSSION**


**FOR CONSENSUS**

<b>Previous Meeting Minutes</b>	Approved

**FOLLOW-UP**

<b>Who</b>	<b>Item</b>	<b>Timeline</b>

**1. WORK AHEAD**

- 

**NEXT MEETING: September 6, 2023**

# WELCOME TO THE FACILITIES COMMITTEE

## How to contact FMO

[Grossmont.FMO@gcccd.edu](mailto:Grossmont.FMO@gcccd.edu)

For maintenance, grounds, custodial and operation needs

Colleen Parsons, Ryan Althaus, Bill Roessner, Pepe Levy, Joel Lopez

[Grossmont.restrooms@gcccd.edu](mailto:Grossmont.restrooms@gcccd.edu)

For restrooms that need attention

**GROSSMONT COLLEGE FACILITIES COMMITTEE**

**FACILITIES PROJECT REQUEST PRIORITIZATION FOR YEAR 2022-2023**

<b>Rank</b>	<b>Title</b>	<b>Description</b>	<b>Reason for Rating</b>	<b>Cost</b>
1	<b>FPR 23-05 Mental Health Space</b>	Remodeling current space to add at least two offices and one storage.	Recognize the importance of mental health care for students and employees. Mental health plays a significant role in student academic success, retention, and equity.	\$400,000
2	<b>FPR 23-01 CVTE Flooring</b>	Remove carpet and replace with rubber resilient flooring so students can roll CVTE equipment across the floor safely.	Needed for student function and safety.	\$14,950
3	<b>FPR 23-02 Bio Chairs</b>	Replace worn out stools with chairs with back support.	Biology has submitted FPR for new chairs for the last four years with approval, but funding was not available. Chairs need back support for long lab hours.	\$16,000
4	<b>FPR 23-03 Culinary Electrical</b>	Add pulldown electrical from the ceiling to replace extension cords taped across the floor. Correct overloaded circuits that keep popping.	Corrections of electrical safety and upgrades are needed. An important project for student and staff safety.	\$75,000
5	<b>FPR 23-10 Bio Cabinets</b>	Bldg 30-128 biology lab need more upper cabinet space above counter.	Biology has been FPR requesting new cabinets for the last three years with approval, but funding was not available. The cabinets provide student and tech with supplies needed in the lab.	\$50,000
6	<b>FPR 23-09 Nature Trail</b>	Install water-bar steps for erosion and safety, repair fencing for security, and remove large invasive vegetation that is encroaching on the natural habitat.	The work is needed but does not serve as many students as other labs.	\$200,000
7	<b>FPR 23-08 Transfer Center Space</b>	Move Transfer Services and Adult Re-Entry to Bldg 60-145 to gain needed space in Bldg 10 for Umoja and Puente Program.	This project is needed for our student services in the near future and worthy of funding.	\$400,000

# FACILITIES COMMITTEE AGENDA

1. Introductions –
2. Agenda – Additions/Deletions –
3. Approve Meeting Minutes –
4. 5-Minute Public Comment –
5. **Update the questions on the FPR form – Loren**
6. Art Committee Update - Jennifer
7. Construction Timeline and Impacts- Loren

DATE 5/3/23

# Facilities Project Request (FPR)

<b>FPR#:</b> <input type="text"/> <i>(Office Use)</i>
---

**Note:** Facilities Project Requests (FPR) are submitted in two stages. Applicants must first request a Feasibility Study (known as Section 1). The Section 1 form is available in the right margin containing AUP resources. The Feasibility Study needs to be submitted to the Facilities Director by June 1. This allows time for the study to be completed over the summer months. The Facilities Director will inform applicants about the status of the feasibility study (approved or disapproved).

Section 2 of the FPR will only be considered if an approved Feasibility Study (signatures completed) has been uploaded here. [Upload FPR Section 1 here.](#)

## Facilities Project Request Section 2

**Date:**

**Requestors name:**

**Phone:**

**Project Title:**

**Project Location (building and room number):**

**Department/Program:**

- 1) Project Description: Please be specific and thorough. You may attach a diagram or sketch of the proposed project to help illustrate your project. Word count suggestion: 100 to 500 words.
- 2) Project Category (check all that apply):
  - Technology: audiovisual, computers, data, software, or phones
  - Construction: building or structure modification or new construction
  - Electrical, mechanical, or plumbing
  - Landscape or outdoor project
  - Furniture or space utilization
  - Reconfiguration of furniture
  - Reconfiguration of the layout of a shared space
  - New furniture (For individual offices, a different process is used: please see your dean)
- 3) Reason/Need: Briefly describe the need/reason for this request. Include a description of any recent changes (or pending changes) that have contributed to this need.
- 4) Data: What data is available to support this request? Please provide an analysis of the data, the source of data, and an explanation demonstrating how this data specifically supports this request.

- 5) Mission Priority/Strategic Goal: Select which College Mission Priority, Strategic Goal/Objective, and/or other College plans/initiatives this request supports (check all that apply) and provide an explanation in the space provided.

Mission Priority/Strategic Goal	Explanation
<p><i>Mission Priority</i></p> <ul style="list-style-type: none"> <li>▪ Clear &amp; accessible academic/career pathways</li> <li>▪ Student-centered learning environment</li> <li>▪ Student success &amp; equity</li> </ul>	
<p><i>Strategic Goal #1: Educational Excellence</i></p> <ul style="list-style-type: none"> <li>▪ Increase equitable access</li> <li>▪ Eliminate equity gaps</li> <li>▪ Improve student persistence</li> <li>▪ Increase certificate/degree/transfer rates</li> </ul>	
<p><i>Strategic Goal #2: Completion Culture</i></p> <ul style="list-style-type: none"> <li>▪ Remove barriers for racially marginalized students</li> <li>▪ Increase 3-year graduation rates</li> <li>▪ Increase career and transfer outcomes</li> </ul>	
<p><i>Strategic Goal #3: Innovation &amp; Effectiveness</i></p> <ul style="list-style-type: none"> <li>▪ Tools for students to monitor progress toward goals</li> <li>▪ Scale-up successful programs and services</li> <li>▪ Examine &amp; use disaggregated data using an intersectional lens to inform decision-making</li> </ul>	
<p><i>Strategic Goal #4: Operational Excellence</i></p> <ul style="list-style-type: none"> <li>▪ Improve systems &amp; processes</li> <li>▪ Strengthen college-wide collaboration/communication</li> <li>▪ Increase opportunities for professional development on equitable/anti-racist practices</li> </ul>	
<p>Strategic Goal #5: Community Collaboration</p>	
<ul style="list-style-type: none"> <li>▪ Increase community partnerships</li> <li>▪ Increase experiential learning opportunities</li> <li>▪ Strengthen community engagement</li> </ul>	
<p>Other (e.g., Strategic Enrollment Management)</p>	

- 6) Requirements: Is this request required by one of the following? Please explain.
- a) Legal mandate:
  - b) Program/College accreditation criteria:
  - c) Health/safety/OSHA priorities:
  - d) Critical threshold of educational & support services:
  - e) Essential operations:

7) Urgency: Using the rubric below, indicate this request's urgency level.

Level of Urgency	Impact	Suggested Action
High	If request is not fulfilled, program/work stoppage will occur and no work around exists; or contractual/accreditation requirements will not be met.	Consult with dean/supervisor/manager <i>Reserved for situations where resolution is needed sooner than prioritization/planning cycle can be completed (approx. 3-6 month timeline)</i>
Medium	Moderate impact on programming and/or operations if request is not fulfilled.	Submit resource request for prioritization (approx. 3-6 month timeline)
Low	Minimal to no impact on programming and/or operations if request is not fulfilled.	Submit resource request for prioritization (approx. 3-6 month timeline)

Please explain the urgency level:

8) FMO Impact: Will your project require extensive labor or time from Facilities, Maintenance, & Operations staff?

- Yes
- No
- Unsure

9) Benefit and Impact on Students: How will this resource impact students' learning and/or experience (at the course/program/service level and/or engagement level)?

10) Benefit and Impacts to the College Campus: (How will this project enhance or impact other college programs, services, and/or operations?)

11) Project support: Does your project support one or more of the following? If so, please explain.

- College or District Facilities Master Plan \_\_\_\_
- Sustainability Impact \_\_\_\_\_
- ADA accessibility \_\_\_\_

12) Budget:

- a) Estimated Cost (leave blank if you do not have this information) \_\_\_\_
- b) What funding source will be used to pay for this request? \_\_\_\_
- c) Will this request require one-time funding or ongoing funding? Please explain: \_\_\_\_
- d) How long before this project must be replaced? \_\_\_\_

13) Timeline or Ideal Target Date of Completion: \_\_\_\_



### FPR - Facilities Project Request Scorecard - Facilities Committee

Project Title:

FC Member:

*Possible Criteria Scores: 0-5 with 5 the highest score*

REFER TO	CRITERIA	SCORE
<b>Benefits and Impacts</b>		
A	3,4,9 Direct/indirect benefit for students	5
B	3,4,9 Direct/indirect impact on students <b>(0 = Impact, 5 = No Impact)</b>	5
C	3,4,10 Benefit for other depts., services, programs	5
D	3,4,10 Impact on other depts., services, programs <b>(0 = Impact, 5 = No Impact)</b>	5
E	5 Mission Priority	5
F	5 Strategic Goals	5
<b>Project Support</b>		
G	6 Legal Mandate	5
H	6 Program/College Accreditation Criteria	5
I	6 Health/Safety/OSHA Priorities	5
J	6 Critical Threshold of Educational & Support Services	5
K	6 Essential Operations	5
L	6 College or District Facilities Master Plan	5
M	6 Sustainability Impact	5
N	6 ADA Accessibility	5
<b>Budget</b>		
O	12 Potential/Recommended funding source	5
P	12 One-Time Cost Effectiveness	5
Q	12 Projected Long-Term Effectiveness	5
R	12 Effective Life-Cycle (Replacement Time)	5
S	12 Cost Feasibility	5
<b>Timeline</b>		
T	7,13 Urgent Need	5
U	7,13 Project Start/Finish Feasibility	5
<b>Project Total Score Out of %100</b>		<b>100</b>
Comments:		
<b>Facilities Director Report</b>		
Director's (1)	Construction impact on students/staff <b>(0 = Impact, 5 = No Impact)</b>	5
Director's (2)	Continual impact on FMD <b>(0 = Impact, 5 = No Impact)</b>	5
Director's (3)	Construction impact on FMD <b>(0 = Impact, 5 = No Impact)</b>	5
Director's (4)	Project Physical Feasibility	5
Director's (5)	Project Support Feasibility	5
Director's (6)	Cost Feasibility	5
Director's (7)	Project Start/Finish Feasibility	5
<b>Project Total Score Out of %100</b>		<b>100</b>
Comments:		

# FACILITIES COMMITTEE AGENDA

1. Introductions –
2. Agenda – Additions/Deletions –
3. Approve Meeting Minutes –
4. 5-Minute Public Comment –
5. Update the questions on the FPR form – Loren
6. Art Committee Update - Jennifer
7. **Construction Timeline and Impacts- Loren**

DATE 5/3/23

# Facilities Impact Update April 2023



Building 36 Math and Earth Science Complex







GROSSMONT  
COLLEGE

# Math, Science & Career Tech Complex Phase 2-Building 36



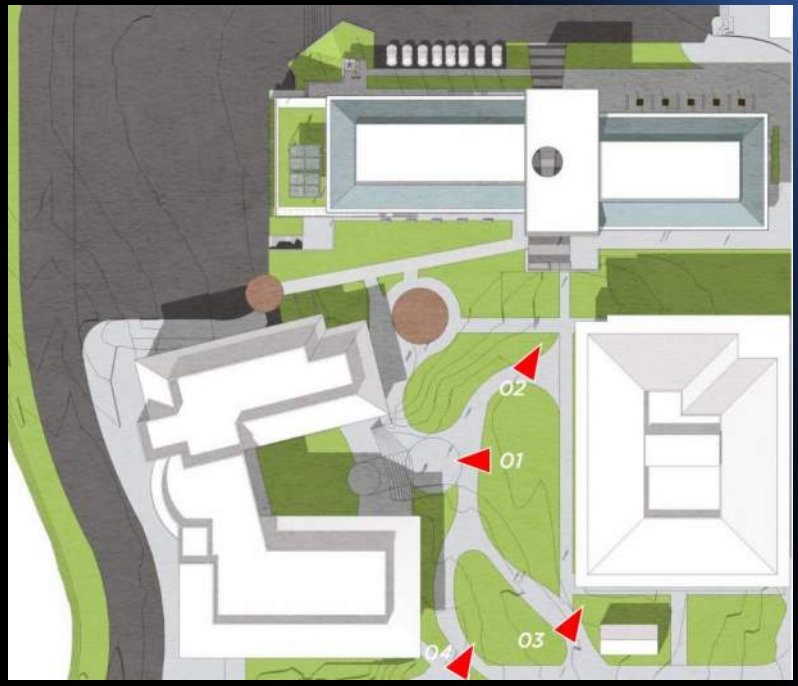
GROSSMONT  
AND  
CUYAMACA  
COMMUNITY COLLEGES



GROSSMONT-CUYAMACA  
COMMUNITY COLLEGE DISTRICT

COMING IN WINTER 2023



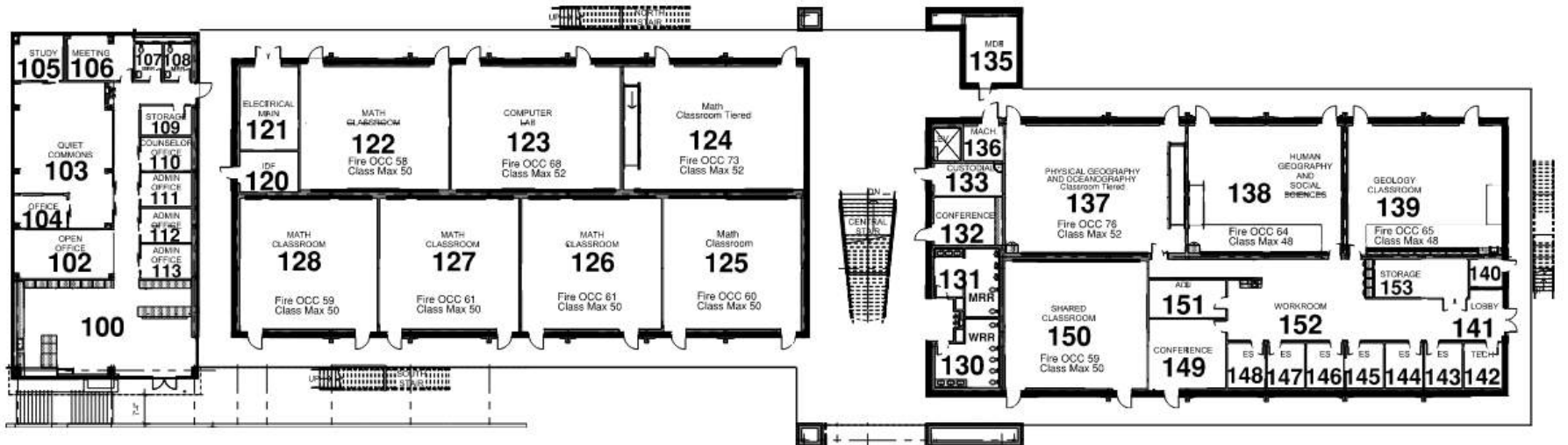




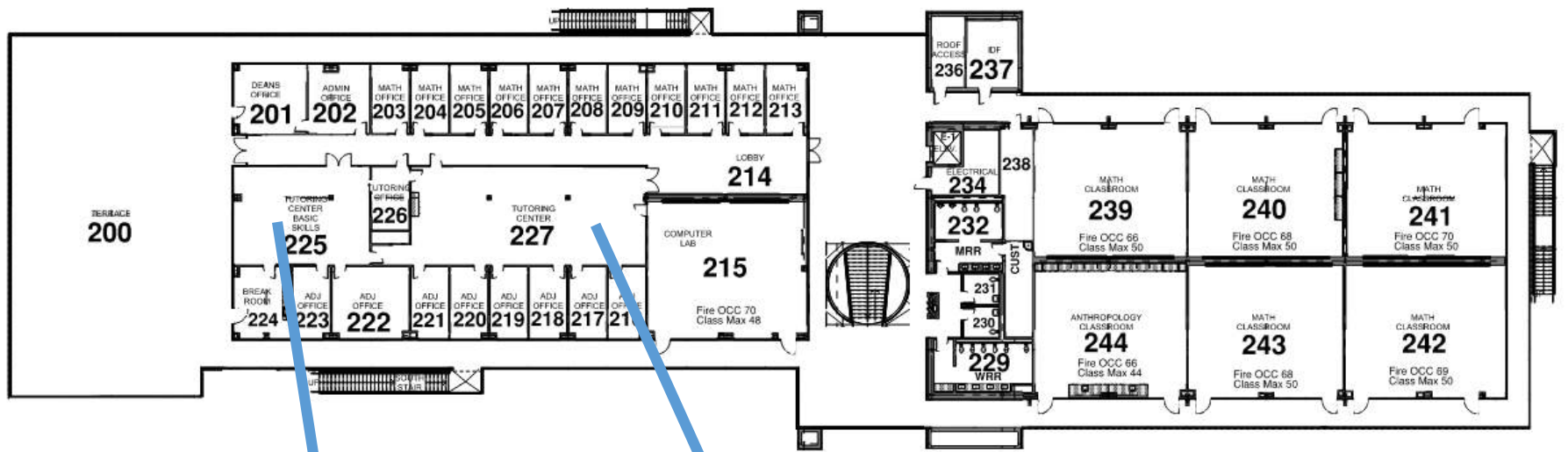


Bldg 36 Floorplan

**BUILDING 36  
SECOND FLOOR**

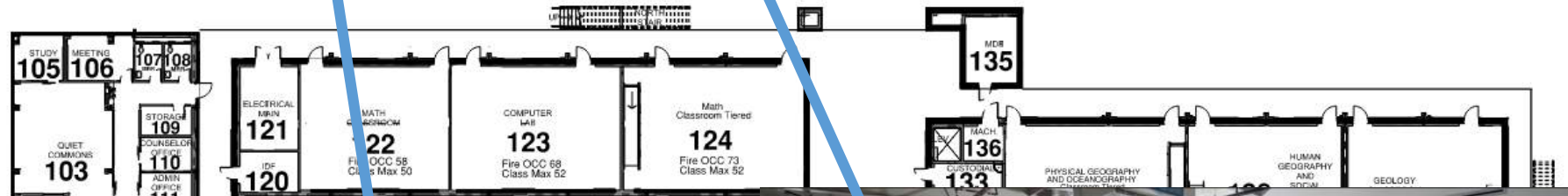


**BUILDING 36  
FIRST FLOOR**



Bldg 36 Floorplan

BUILDING 36  
SECOND FLOOR







Math Faculty Office



VRC Entry/Lounge



Math Classroom



Earth Science Classroom

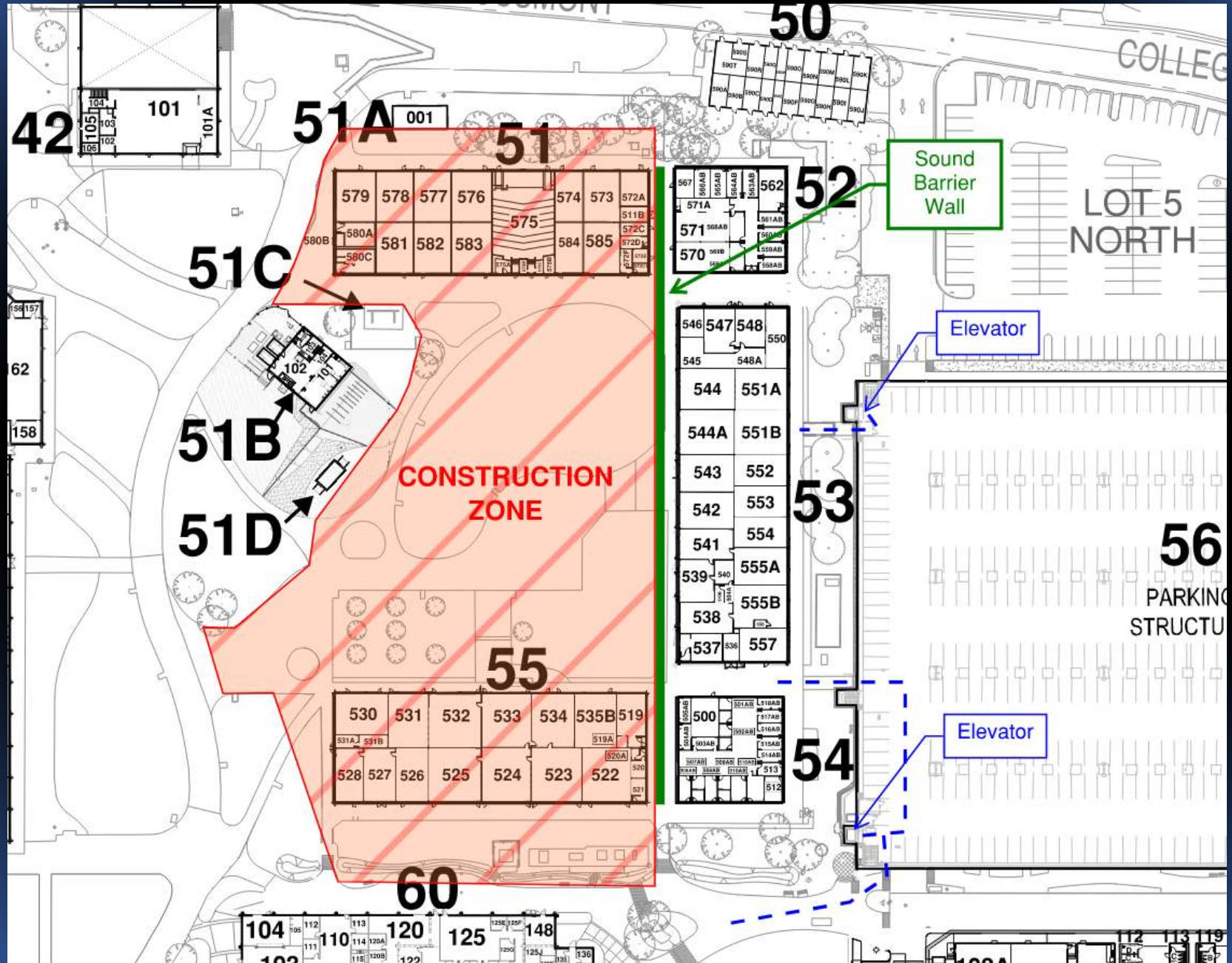


Earth Science Classroom

Bldg	Grossmont Projects	2023												2024												2025												2026	
		D	J	F	M	A	M	J	J	A	S	O	N	D	J	F	M	A	M	J	J	A	S	O	N	D	J	F	M	A	M	J	J	A	S	O	N	D	J
36	Construction Completion/Relocation	Construction												Rele																									
52	Relocation	Rele	Interim Swing Space										Rele																										
52	Hazmat/Demo																																						
52	52/54 - Infrastructure Data/Elect/Fire																																						
52	52/54 - Install Chiller Lines																																						
52	52/53/54 - Paint, Chair rail & base molding																																						
52	52/53/54 - Fan Coils /54 Elect																																						
52	PME, Transformer, IT Cabinet																																						
55	55 & 70 - Computer Lab Relo																																	Rele					
50	Relocation Permanently (& other office moves)																																	Rele					
50	New Modulars in Lot 1 (Bldg 15 & 16) May 12													Rele																									
51	51/55 - Construction/Relo	←												Rele		(20) Months Construction																		Rele					
20	20s Heat Installation																																						
20	SM - Bldg 24 & 27 Paint Exhaust																																						
21	21 & 26 Design Task Force																																						
21	21 & 26 Swing Space Relocation																																	Rele					
21	21 & 26 Construction Starts																																						
26	Replace Classroom Lighting																																						
30	Bldg 30 Fume Hood Repair																																						
35	Bldg 35 Hazmat Storage Code Compliance																																						
39	SM - Pool Consultant																																						
39	SM - Pool (SOW Unknown)																																						
41	SM - Boiler																																						
42	HVAC Replacement																																						
42	SM - HVAC Duct and Flooring																																						
51	Gizmo Kitchen																																						
60	Exterior RR Renovation																																						
62	HVAC Replacement																																						
70	LTRC Furniture																																						
86	HVAC Replacement																																						
	HEERF - Duct Cleaning																																						
	HEERF - Hyflex Classrooms																																						
	HEERF - Touchless Doors																																						
	HEERF - Touchless Plumbing & Water Bottle																																						
	HEERF - WAPS																																						
	SM - Eyewash Stations																																						
	SM - Fire Sprinkler Repair																																						
	SM - Water Heater Replacement																																						
	Perimeter Road 2nd Phase																																						

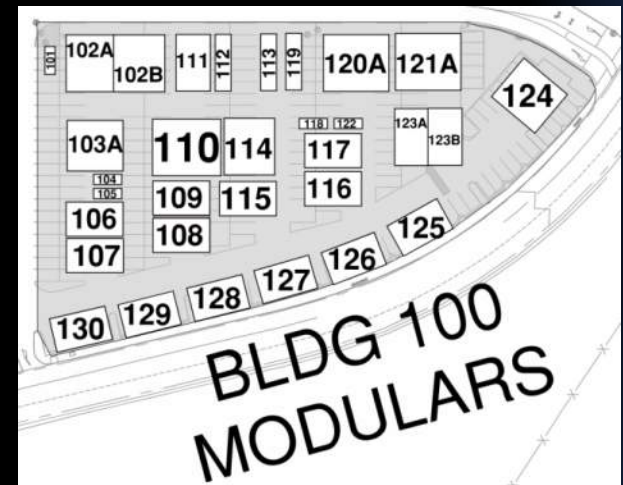
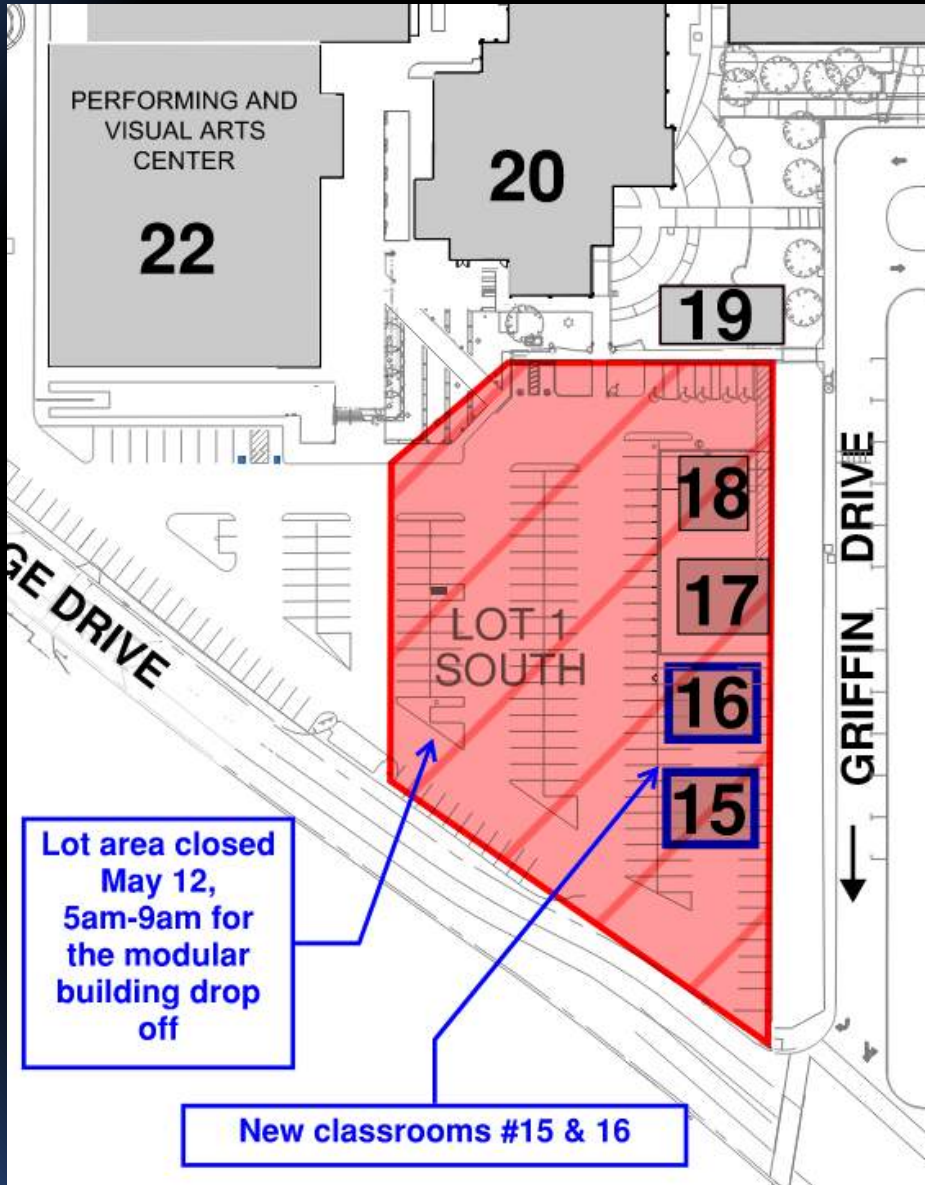


# Bldg 51/55 Renovation



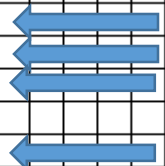
Bldg	Grossmont Projects	2023												2024												2025												2026	
		D	J	F	M	A	M	J	J	A	S	O	N	D	J	F	M	A	M	J	J	A	S	O	N	D	J	F	M	A	M	J	J	A	S	O	N	D	J
36	Construction Completion/Relocation	Construction												Rele																									
52	Relocation	Rele	Interim Swing Space											Rele																									
52	Hazmat/Demo																																						
52	52/54 - Infrastructure Data/Elect/Fire																																						
52	52/54 - Install Chiller Lines																																						
52	52/53/54 - Paint, Chair rail & base molding																																						
52	52/53/54 - Fan Coils /54 Elect																																						
52	PME, Transformer, IT Cabinet																																						
55	55 & 70 - Computer Lab Relo																																						
50	Relocation Permanently (& other office moves)																																						
50	New Modulars in Lot 1 (Bldg 15 & 16) May 12													Rele	←																								
51	51/55 - Construction/Relo													Rele	(20) Months Construction																		Rele						
20	20s Heat Installation																																						
20	SM - Bldg 24 & 27 Paint Exhaust																																						
21	21 & 26 Design Task Force																																						
21	21 & 26 Swing Space Relocation																																						
21	21 & 26 Construction Starts																																						
26	Replace Classroom Lighting																																						
30	Bldg 30 Fume Hood Repair																																						
35	Bldg 35 Hazmat Storage Code Compliance																																						
39	SM - Pool Consultant																																						
39	SM - Pool (SOW Unknown)																																						
41	SM - Boiler																																						
42	HVAC Replacement																																						
42	SM - HVAC Duct and Flooring																																						
51	Gizmo Kitchen																																						
60	Exterior RR Renovation																																						
62	HVAC Replacement																																						
70	LTRC Furniture																																						
86	HVAC Replacement																																						
	HEERF - Duct Cleaning																																						
	HEERF - Hyflex Classrooms																																						
	HEERF - Touchless Doors																																						
	HEERF - Touchless Plumbing & Water Bottle																																						
	HEERF - WAPS																																						
	SM - Eyewash Stations																																						
	SM - Fire Sprinkler Repair																																						
	SM - Water Heater Replacement																																						
	Perimeter Road 2nd Phase																																						

# Bldg 51/55 Swing Space





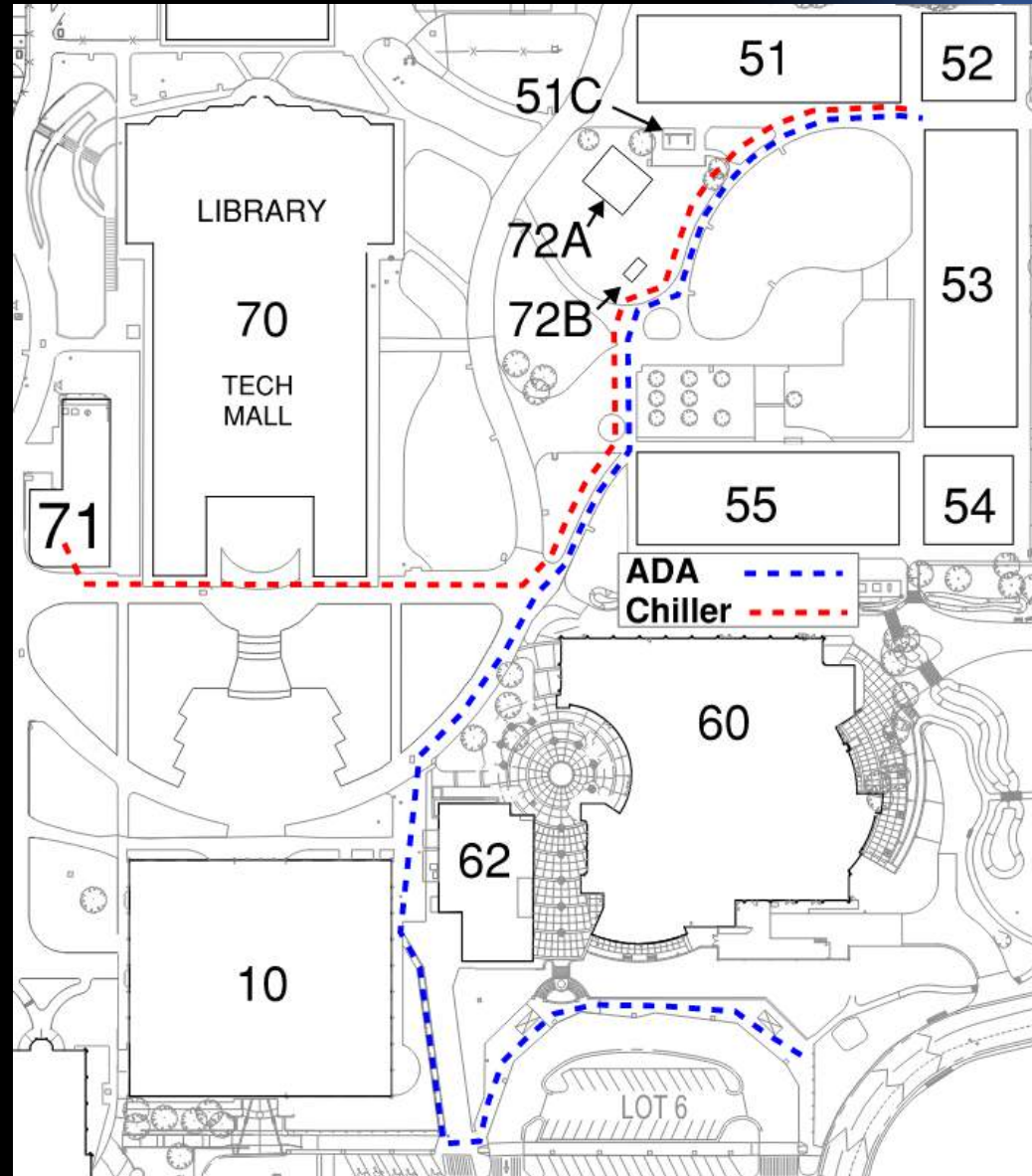
Bldg	Grossmont Projects	2023												2024												2025												2026	
		D	J	F	M	A	M	J	J	A	S	O	N	D	J	F	M	A	M	J	J	A	S	O	N	D	J	F	M	A	M	J	J	A	S	O	N	D	J
36	Construction Completion/Relocation	Construction												Rele																									
52	Relocation	Rele	Interim Swing Space											Rele																									
52	Hazmat/Demo																																						
52	52/54 - Infrastructure Data/Elect/Fire																																						
52	52/54 - Install Chiller Lines																																						
52	52/53/54 - Paint, Chair rail & base molding																																						
52	52/53/54 - Fan Coils /54 Elect																																						
52	PME, Transformer, IT Cabinet																																						
55	55 & 70 - Computer Lab Relo																																					Rele	
50	Relocation Permanently (& other office moves)																																						
50	New Modulars in Lot 1 (Bldg 15 & 16) May 12													Rele																									
51	51/55 - Construction/Relo													Rele	(20) Months Construction											Rele													
20	20s Heat Installation																																						
20	SM - Bldg 24 & 27 Paint Exhaust																																						
21	21 & 26 Design Task Force																																						
21	21 & 26 Swing Space Relocation																																					Rele	
21	21 & 26 Construction Starts																																						
26	Replace Classroom Lighting																																						
30	Bldg 30 Fume Hood Repair																																						
35	Bldg 35 Hazmat Storage Code Compliance																																						
39	SM - Pool Consultant																																						
39	SM - Pool (SOW Unknown)																																						
41	SM - Boiler																																						
42	HVAC Replacement																																						
42	SM - HVAC Duct and Flooring																																						
51	Gizmo Kitchen																																						
60	Exterior RR Renovation																																						
62	HVAC Replacement																																						
70	LTRC Furniture																																						
86	HVAC Replacement																																						
	HEERF - Duct Cleaning																																						
	HEERF - Hyflex Classrooms																																						
	HEERF - Touchless Doors																																						
	HEERF - Touchless Plumbing & Water Bottle																																						
	HEERF - WAPS																																						
	SM - Eyewash Stations																																						
	SM - Fire Sprinkler Repair																																						
	SM - Water Heater Replacement																																						
	Perimeter Road 2nd Phase																																						



# Bldg 52-54 Project

## Summer/Fall 2023 Projects

- Main Chiller extension to service Bldgs 51, 53 and 55
- Cosmetic upgrades to Bldgs 52-54
- Fan coil replacements in Bldgs 53 and 54
- Data and Power rerouting to Bldg 50
- Power rerouting to Bldg 54
- Installation of new electrical PME switches for Bldgs 51 and 55
- ADA concrete upgrades from the 500 complex to the bus stop area



Bldg	Grossmont Projects	2023												2024												2025												2026	
		D	J	F	M	A	M	J	J	A	S	O	N	D	J	F	M	A	M	J	J	A	S	O	N	D	J	F	M	A	M	J	J	A	S	O	N	D	J
36	Construction Completion/Relocation	Construction												Rele																									
52	Relocation	Rele	Interim Swing Space										Rele																										
52	Hazmat/Demo																																						
52	52/54 - Infrastructure Data/Elect/Fire																																						
52	52/54 - Install Chiller Lines																																						
52	52/53/54 - Paint, Chair rail & base molding																																						
52	52/53/54 - Fan Coils /54 Elect																																						
52	PME, Transformer, IT Cabinet																																						
55	55 & 70 - Computer Lab Relo																																	Rele					
50	Relocation Permanently (& other office moves)																																						
50	New Modulars in Lot 1 (Bldg 15 & 16) May 12													Rele																									
51	51/55 - Construction/Relo													Rele		(20) Months Construction																		Rele					
20	20s Heat Installation																																						
20	SM - Bldg 24 & 27 Paint Exhaust																																						
21	21 & 26 Design Task Force																																						
21	21 & 26 Swing Space Relocation																																	Rele					
21	21 & 26 Construction Starts																																						
26	Replace Classroom Lighting																																						
30	Bldg 30 Fume Hood Repair																																						
35	Bldg 35 Hazmat Storage Code Compliance																																						
39	SM - Pool Consultant																																						
39	SM - Pool (SOW Unknown)																																						
41	SM - Boiler																																						
42	HVAC Replacement																																						
42	SM - HVAC Duct and Flooring																																						
51	Gizmo Kitchen																																						
60	Exterior RR Renovation																																						
62	HVAC Replacement																																						
70	LTRC Furniture																																						
86	HVAC Replacement																																						
	HEERF - Duct Cleaning																																						
	HEERF - Hyflex Classrooms																																						
	HEERF - Touchless Doors																																						
	HEERF - Touchless Plumbing & Water Bottle																																						
	HEERF - WAPS																																						
	SM - Eyewash Stations																																						
	SM - Fire Sprinkler Repair																																						
	SM - Water Heater Replacement																																						
	Perimeter Road 2nd Phase																																						







**CONSTRUCTION ZONE**

Sound Barrier Wall

Elevator

Elevator

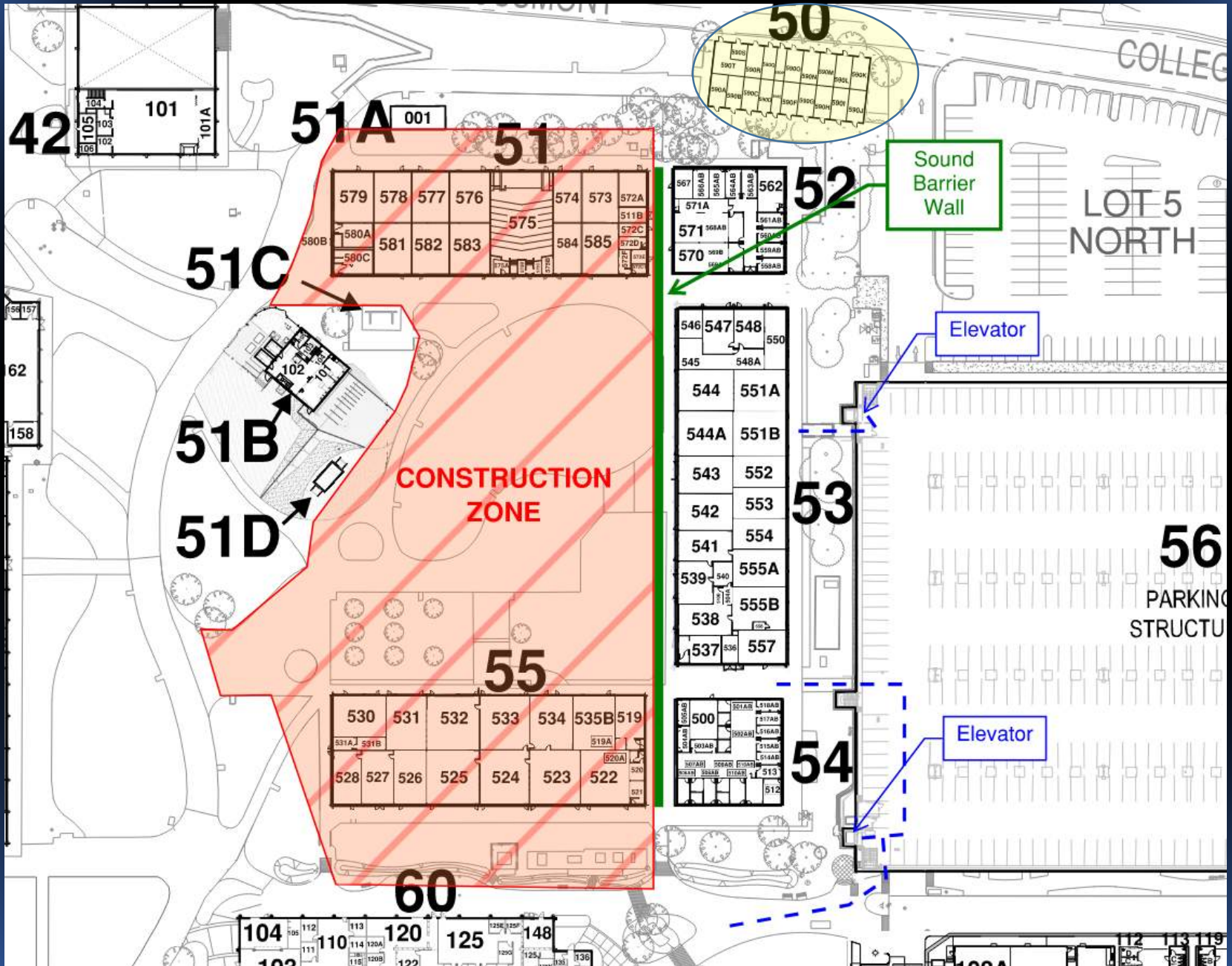
New Classrooms

Bldg	Grossmont Projects	2023												2024												2025												2026					
		D	J	F	M	A	M	J	J	A	S	O	N	D	J	F	M	A	M	J	J	A	S	O	N	D	J	F	M	A	M	J	J	A	S	O	N	D	J	F			
36	Construction Completion/Relocation	Construction												Rele																													
52	Relocation	Rele	Interim Swing Space										Rele																														
52	Hazmat/Demo																																										
52	52/54 - Infrastructure Data/Elect/Fire																																										
52	52/54 - Install Chiller Lines																																										
52	52/53/54 - Paint, Chair rail & base molding																																										
52	52/53/54 - Fan Coils /54 Elect																																										
52	PME, Transformer, IT Cabinet																																										
55	55 & 70 - Computer Lab Relo																					Rele																					
50	Relocation Permanently (& other office moves)																					Rele																					
50	New Modulars in Lot 1 (Bldg 15 & 16) May 12													Rele																													
51	51/55 - Construction/Relo													Rele		(20) Months Construction																		Rele									
20	20s Heat Installation																																										
20	SM - Bldg 24 & 27 Paint Exhaust																																										
21	21 & 26 Design Task Force																																										
21	21 & 26 Swing Space Relocation																					Rele																					
21	21 & 26 Construction Starts																																										
26	Replace Classroom Lighting																																										
30	Bldg 30 Fume Hood Repair																																										
35	Bldg 35 Hazmat Storage Code Compliance																																										
39	SM - Pool Consultant																																										
39	SM - Pool (SOW Unknown)																																										
41	SM - Boiler																																										
42	HVAC Replacement																																										
42	SM - HVAC Duct and Flooring																																										
51	Gizmo Kitchen																																										
60	Exterior RR Renovation																																										
62	HVAC Replacement																																										
70	LTRC Furniture																																										
86	HVAC Replacement																																										
	HEERF - Duct Cleaning																																										
	HEERF - Hyflex Classrooms																																										
	HEERF - Touchless Doors																																										
	HEERF - Touchless Plumbing & Water Bottle																																										
	HEERF - WAPS																																										
	SM - Eyewash Stations																																										
	SM - Fire Sprinkler Repair																																										
	SM - Water Heater Replacement																																										
	Perimeter Road 2nd Phase																																										

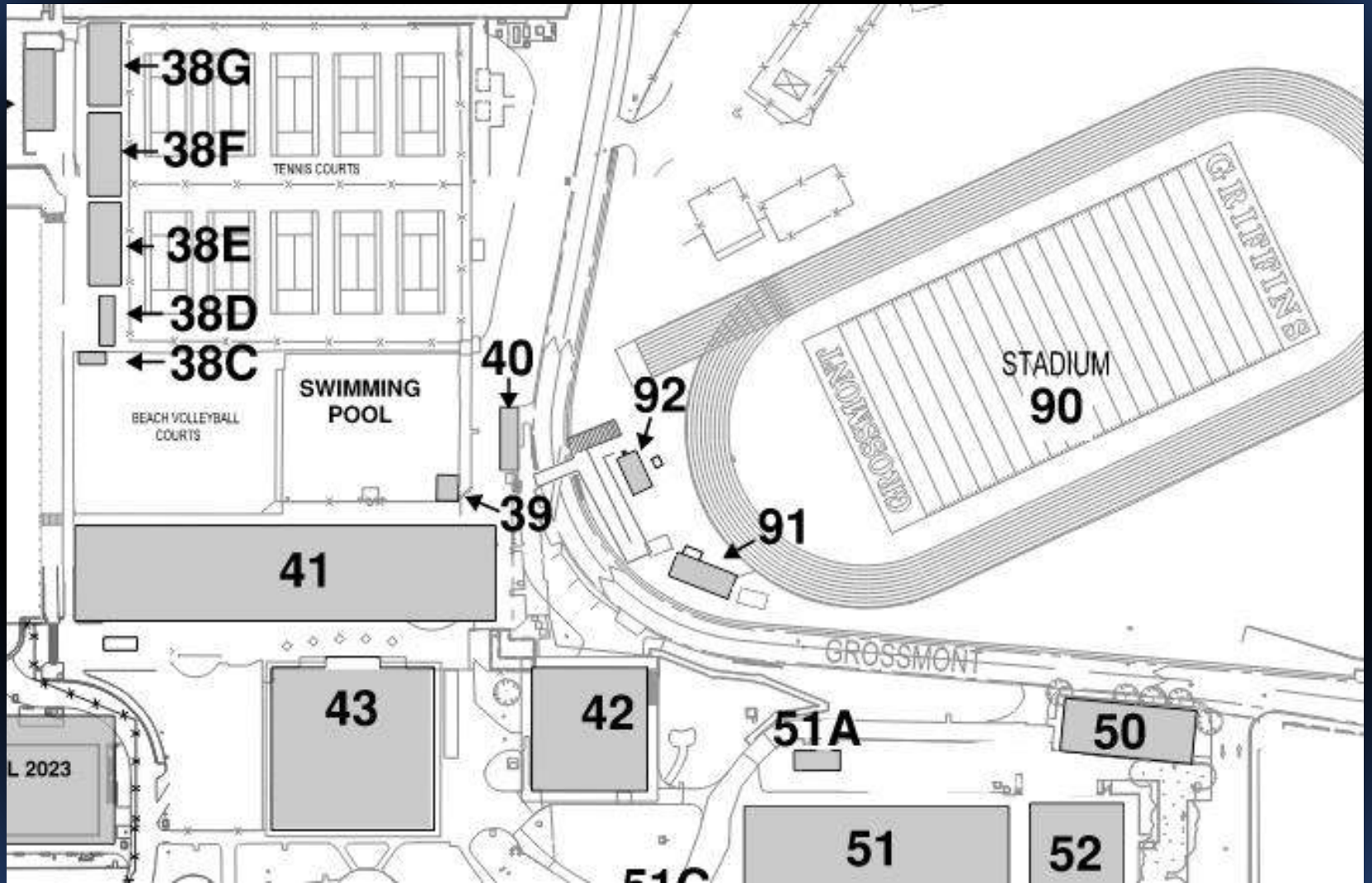




# Bldg 51/55 Renovation



Bldg	Grossmont Projects	2023												2024												2025												2026	
		D	J	F	M	A	M	J	J	A	S	O	N	D	J	F	M	A	M	J	J	A	S	O	N	D	J	F	M	A	M	J	J	A	S	O	N	D	J
36	Construction Completion/Relocation	Construction												Rele																									
52	Relocation	Rele	Interim Swing Space											Rele																									
52	Hazmat/Demo																																						
52	52/54 - Infrastructure Data/Elect/Fire																																						
52	52/54 - Install Chiller Lines																																						
52	52/53/54 - Paint, Chair rail & base molding																																						
52	52/53/54 - Fan Coils /54 Elect																																						
52	PME, Transformer, IT Cabinet																																						
55	55 & 70 - Computer Lab Relo																									Rele													
50	Relocation Permanently (& other office moves)																																						
50	New Modulars in Lot 1 (Bldg 15 & 16) May 12													Rele																									
51	51/55 - Construction/Relo													Rele	(20) Months Construction																		Rele						
20	20s Heat Installation																																						
20	SM - Bldg 24 & 27 Paint Exhaust																																						
21	21 & 26 Design Task Force																																						
21	21 & 26 Swing Space Relocation																									Rele													
21	21 & 26 Construction Starts																																						
26	Replace Classroom Lighting																																						
30	Bldg 30 Fume Hood Repair																																						
35	Bldg 35 Hazmat Storage Code Compliance																																						
39	SM - Pool Consultant																																						
39	SM - Pool (SOW Unknown)																																						
41	SM - Boiler	←←←←←																																					
42	HVAC Replacement	←←←←←																																					
42	SM - HVAC Duct and Flooring	←←←←←																																					
51	Gizmo Kitchen																																						
60	Exterior RR Renovation																																						
62	HVAC Replacement																																						
70	LTRC Furniture																																						
86	HVAC Replacement																																						
	HEERF - Duct Cleaning																																						
	HEERF - Hyflex Classrooms																																						
	HEERF - Touchless Doors																																						
	HEERF - Touchless Plumbing & Water Bottle																																						
	HEERF - WAPS																																						
	SM - Eyewash Stations																																						
	SM - Fire Sprinkler Repair																																						
	SM - Water Heater Replacement																																						
	Perimeter Road 2nd Phase																																						





Bldg	Grossmont Projects	2023												2024												2025												2026	
		D	J	F	M	A	M	J	J	A	S	O	N	D	J	F	M	A	M	J	J	A	S	O	N	D	J	F	M	A	M	J	J	A	S	O	N	D	J
36	Construction Completion/Relocation	Construction												Rele																									
52	Relocation	Rele	Interim Swing Space										Rele																										
52	Hazmat/Demo																																						
52	52/54 - Infrastructure Data/Elect/Fire																																						
52	52/54 - Install Chiller Lines																																						
52	52/53/54 - Paint, Chair rail & base molding																																						
52	52/53/54 - Fan Coils /54 Elect																																						
52	PME, Transformer, IT Cabinet																																						
55	55 & 70 - Computer Lab Relo																																						
50	Relocation Permanently (& other office moves)																																						
50	New Modulars in Lot 1 (Bldg 15 & 16) May 12													Rele																									
51	51/55 - Construction/Relo													Rele	(20) Months Construction																		Rele						
20	20s Heat Installation																																						
20	SM - Bldg 24 & 27 Paint Exhaust																																						
21	21 & 26 Design Task Force																																						
21	21 & 26 Swing Space Relocation																																						
21	21 & 26 Construction Starts																																						
26	Replace Classroom Lighting																																						
30	Bldg 30 Fume Hood Repair																																						
35	Bldg 35 Hazmat Storage Code Compliance																																						
39	SM - Pool Consultant																																						
39	SM - Pool (SOW Unknown)																																						
41	SM - Boiler																																						
42	HVAC Replacement																																						
42	SM - HVAC Duct and Flooring																																						
51	Gizmo Kitchen																																						
60	Exterior RR Renovation																																						
62	HVAC Replacement																																						
70	LTRC Furniture																																						
86	HVAC Replacement																																						
	HEERF - Duct Cleaning													←																									
	HEERF - Hyflex Classrooms													←																									
	HEERF - Touchless Doors													←																									
	HEERF - Touchless Plumbing & Water Bottle													←																									
	HEERF - WAPS													←																									
	SM - Eyewash Stations																																						
	SM - Fire Sprinkler Repair																																						
	SM - Water Heater Replacement																																						
	Perimeter Road 2nd Phase																																						

4/24/23 updates

Look ahead  
Weeks

1	Mon 4/24/2023	Tue 4/25/2023	Wed 4/26/2023	Thu 4/27/2023	Fri 4/28/2023	Sat 4/29/2023	Sun 4/30/2023
	HYFLEX: (Night) Cuyamaca : No work Scheduled Grossmont : 34 & 30	HYFLEX: (Night) Cuyamaca : No work Scheduled Grossmont : 30	HYFLEX: (Night) 8pm to 4am - 10am - Weekly OAC Cuyamaca : M & L & K Grossmont : 30	HYFLEX: (Night) 8pm to 4am 8pm to 4am Cuyamaca : M & L & K Grossmont : 30	HYFLEX: (Day) 7am to 4pm 7am to 4pm Cuyamaca : E sign Off Grossmont : 30	HYFLEX: (Day) 7am to 4pm 7am to 4pm Cuyamaca : No work Scheduled Grossmont : 30	HYFLEX: (Night) Cuyamaca : NO WORK Grossmont : NO WORK
	Duct Cleaning: (Night) 9pm-7am Cuyamaca: F100 Grossmont: 30	Duct Cleaning: (Night) 9pm-7am Cuyamaca: F100 & F200 Grossmont: 30	Duct Cleaning: (Night) 9pm-7am - 2 pm - Weekly OAC Cuyamaca: F200 Grossmont: 30	Duct Cleaning: (Night) 9pm-7am Cuyamaca: F300-400 Grossmont: 30	Duct Cleaning: (Night) - OFF Cuyamaca: NO WORK Grossmont: NO WORK	Duct Cleaning: (Night) - OFF Cuyamaca: NO WORK Grossmont: NO WORK	Duct Cleaning: (Night) - OFF Cuyamaca: NO WORK Grossmont: NO WORK
	TL Fixtures: (DAY) Cuyamaca : Closeout Grossmont : Closeout	TL Fixtures: (DAY) Cuyamaca : Closeout Grossmont : Closeout	TL Fixtures: (DAY) Cuyamaca : Closeout Grossmont : Closeout	TL Fixtures: (DAY) Cuyamaca : Closeout Grossmont : Closeout	TL Fixtures: (DAY) Cuyamaca : Closeout Grossmont : Closeout	TL Fixtures: (DAY) Cuyamaca : Grossmont :	TL Fixtures: (DAY) Cuyamaca : Grossmont :
	TL Doors: (Day) Grossmont : Electrical Installation / Complete Rough Electrical in Building 80A.	TL Doors: (Day) Grossmont : No Work	TL Doors: (Day) Grossmont : Hardware delivery to Storage Container on site	TL Doors: (Day) Grossmont : Hardware installation at Building 80	TL Doors: (Day) Grossmont : Hardware installation at Building 86	TL Doors: (Day) Cuyamaca : Grossmont :	TL Doors: (Day) Cuyamaca : Grossmont :
2	Mon 5/1/2023	Tue 5/2/2023	Wed 5/3/2023	Thu 5/4/2023	Fri 5/5/2023	Sat 5/6/2023	Sun 5/7/2023
	HYFLEX: (Night) 8pm to 4am Cuyamaca : No site scope noted Grossmont : 100 Portables	HYFLEX: (Night) 8pm to 4am Cuyamaca : No site scope noted Grossmont : 100 Portables	HYFLEX: (Night) 8pm to 4am - 10am - Weekly OAC Cuyamaca : No site scope noted Grossmont : 100 Portables	HYFLEX: (Night) 8pm to 2am Cuyamaca : No site scope noted Grossmont : 100 Portables	HYFLEX: (Day) 7am to 4pm Cuyamaca : No site scope noted Grossmont : 100 Portables	HYFLEX: (Day) 7am to 4pm Cuyamaca : No site scope noted Grossmont : 100 Portables	HYFLEX: (Night) Cuyamaca : Grossmont :
	Duct Cleaning: (Night) 9pm-7am Cuyamaca: F400-500 Grossmont: 57 & 42	Duct Cleaning: (Night) 9pm-7am Cuyamaca: F400-500 Grossmont: 42	Duct Cleaning: (Night) 9pm-7am - 2 pm - Weekly OAC Cuyamaca: F500-600 Grossmont: 62	Duct Cleaning: (Night) 9pm-7am Cuyamaca: F500-600 Grossmont: 60	Duct Cleaning: (Night) - OFF Cuyamaca: NO WORK Grossmont: NO WORK	Duct Cleaning: (Night) - OFF Cuyamaca: NO WORK Grossmont: NO WORK	Duct Cleaning: (Night) - OFF Cuyamaca: NO WORK Grossmont: NO WORK
	TL Fixtures: (DAY) Cuyamaca : Closeout Grossmont : Closeout	TL Fixtures: (DAY) Cuyamaca : Closeout Grossmont : Closeout	TL Fixtures: (DAY) Cuyamaca : Closeout Grossmont : Closeout	TL Fixtures: (DAY) Cuyamaca : Closeout Grossmont : Closeout	TL Fixtures: (DAY) Cuyamaca : Closeout Grossmont : Closeout	TL Fixtures: (DAY) Cuyamaca : Grossmont :	TL Fixtures: (DAY) Cuyamaca : Grossmont :
	TL Doors: (Day) Cuyamaca : NO work on site Grossmont : Hardware installation at Building 41	TL Doors: (Day) Cuyamaca : NO work on site Grossmont : Hardware installation at Building 41	TL Doors: (Day) Cuyamaca : NO work on site Grossmont : Hardware installation at Building 53 and Building 60	TL Doors: (Day) Cuyamaca : NO work on site Grossmont : Hardware installation at Building 60 and Building 10	TL Doors: (Day) Cuyamaca : NO work on site Grossmont : Hardware installation at Building 10	TL Doors: (Day) Cuyamaca : Grossmont :	TL Doors: (Day) Cuyamaca : Grossmont :
3	Mon 5/8/2023	Tue 5/9/2023	Wed 5/10/2023	Thu 5/11/2023	Fri 5/12/2023	Sat 5/13/2023	Sun 5/14/2023
	HYFLEX: (Night) 8pm to 4am Cuyamaca : No scope noted Grossmont : 24 & 26	HYFLEX: (Night) 8pm to 4am Cuyamaca : No scope noted Grossmont : 24 & 26	HYFLEX: (Night) 8pm to 4am - 10am - Weekly OAC Cuyamaca : No scope noted Grossmont : 24 & 26	HYFLEX: (Night) 8pm to 4am Cuyamaca : No scope noted Grossmont : 24 & 26	HYFLEX: (Day) 7am to 4pm Cuyamaca : No scope noted Grossmont : 24 & 26	HYFLEX: (Day) 7am to 4pm Cuyamaca : No scope noted Grossmont : 24 & 26	HYFLEX: (Night) Cuyamaca : Grossmont :
	Duct Cleaning: (Night) 9pm-7am Cuyamaca: F600-700 Grossmont: 60	Duct Cleaning: (Night) 9pm-7am Cuyamaca: F600-700 Grossmont: 60	Duct Cleaning: (Night) 9pm-7am - 2 pm - Weekly OAC Cuyamaca: BLDG "I" Grossmont: 60	Duct Cleaning: (Night) 9pm-7am Cuyamaca: BLDG "I" Grossmont: 60	Duct Cleaning: (Night) - OFF Cuyamaca: NO WORK Grossmont: NO WORK	Duct Cleaning: (Night) - OFF Cuyamaca: NO WORK Grossmont: NO WORK	Duct Cleaning: (Night) - OFF Cuyamaca: NO WORK Grossmont: NO WORK
	TL Fixtures: (DAY) Cuyamaca : Closeout Grossmont : Closeout	TL Fixtures: (DAY) Cuyamaca : Closeout Grossmont : Closeout	TL Fixtures: (DAY) Cuyamaca : Closeout Grossmont : Closeout	TL Fixtures: (DAY) Cuyamaca : Closeout Grossmont : Closeout	TL Fixtures: (DAY) Cuyamaca : Closeout Grossmont : Closeout	TL Fixtures: (DAY) Cuyamaca : Grossmont :	TL Fixtures: (DAY) Cuyamaca : Grossmont :
	TL Doors: (Day) Cuyamaca : NO work on site Grossmont : Hardware installation schedule pending	TL Doors: (Day) Cuyamaca : NO work on site Grossmont : Hardware installation schedule pending	TL Doors: (Day) Cuyamaca : NO work on site Grossmont : Hardware installation schedule pending	TL Doors: (Day) Cuyamaca : NO work on site Grossmont : Hardware installation schedule pending	TL Doors: (Day) Cuyamaca : NO work on site Grossmont : Hardware installation schedule pending	TL Doors: (Day) Cuyamaca : Grossmont :	TL Doors: (Day) Cuyamaca : Grossmont :

Bldg	Grossmont Projects	2023												2024												2025												2026	
		D	J	F	M	A	M	J	J	A	S	O	N	D	J	F	M	A	M	J	J	A	S	O	N	D	J	F	M	A	M	J	J	A	S	O	N	D	J
36	Construction Completion/Relocation	Construction												Relo																									
52	Relocation	Relo	Interim Swing Space											Relo																									
52	Hazmat/Demo																																						
52	52/54 - Infrastructure Data/Elect/Fire																																						
52	52/54 - Install Chiller Lines																																						
52	52/53/54 - Paint, Chair rail & base molding																																						
52	52/53/54 - Fan Coils /54 Elect																																						
52	PME, Transformer, IT Cabinet																																						
55	55 & 70 - Computer Lab Relo																																						
50	Relocation Permanently (& other office moves)																																						
50	New Modulars in Lot 1 (Bldg 15 & 16) May 12													Relo																									
51	51/55 - Construction/Relo													Relo	(20) Months Construction																		Relo						
20	20s Heat Installation																																						
20	SM - Bldg 24 & 27 Paint Exhaust																																						
21	21 & 26 Design Task Force																																						
21	21 & 26 Swing Space Relocation																																						
21	21 & 26 Construction Starts																																						
26	Replace Classroom Lighting																																						
30	Bldg 30 Fume Hood Repair																																						
35	Bldg 35 Hazmat Storage Code Compliance																																						
39	SM - Pool Consultant																																						
39	SM - Pool (SOW Unknown)																																						
41	SM - Boiler																																						
42	HVAC Replacement																																						
42	SM - HVAC Duct and Flooring																																						
51	Gizmo Kitchen																																						
60	Exterior RR Renovation																																						
62	HVAC Replacement																																						
70	LTRC Furniture																																						
86	HVAC Replacement																																						
	HEERF - Duct Cleaning																																						
	HEERF - Hyflex Classrooms																																						
	HEERF - Touchless Doors																																						
	HEERF - Touchless Plumbing & Water Bottle																																						
	HEERF - WAPS																																						
	SM - Eyewash Stations																																						
	SM - Fire Sprinkler Repair																																						
	SM - Water Heater Replacement																																						
	Perimeter Road 2nd Phase																																						



Thank You for Attending the  
FACILITIES COMMITTEE

How to contact FMO

[Grossmont.FMO@gcccd.edu](mailto:Grossmont.FMO@gcccd.edu)

For maintenance, grounds, custodial and operation needs

Colleen Parsons, Ryan Althaus, Bill Roessner, Pepe Levy, Joel Lopez

[Grossmont.restrooms@gcccd.edu](mailto:Grossmont.restrooms@gcccd.edu)

For restrooms that need attention